

Legend

- Site Boundary
- Cable Route Alignment
- Target Notes

Areas of Geomorphological Interest

- Burned area/regenerated heather
- Manmade drainage/grips
- Forestry - Felled
- Forestry - Standing
- Gully
- Natural drainage
- Peat cutting
- Ridge
- Ridge/peat cutting
- Mound
- Surface Water Features

Do not scale this map

Client
RES Group

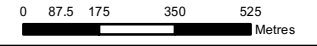
Project
Hill of Fare Wind Farm

Title
Geomorphology

Status
FINAL

Drawing No. 375565-GIS001	Revision A	Date 04 April 2022
Drawn JAS	Checked MN	Approved MN

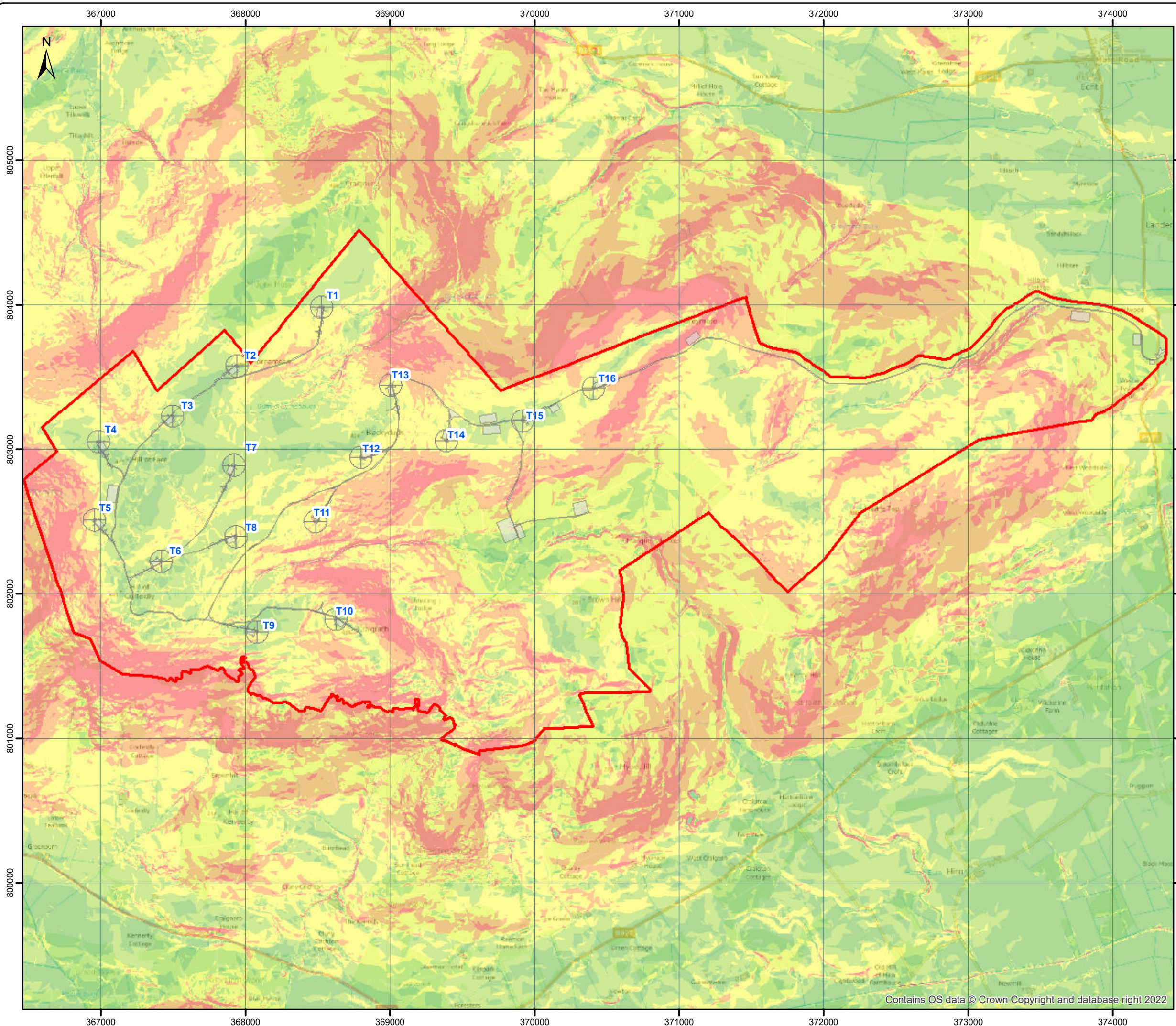
Scale
1:17,500 @A3



Rev	Date	Amendment	Initials
A	11/09/23	Updated Site Boundary	JAS

envirocentre
 8 Eagle Street, Craighall Business Park, Glasgow, G4 9XA.
 T: 0141 341 5040 E: info@envirocentre.co.uk
 W: www.envirocentre.co.uk

Contains OS data © Crown Copyright and database right 2022, Source: Esri, Maxar, Earthstar Geographics, IGN, and the GIS User Community



Legend

- Site Boundary
- Design Freeze Layout (Rev 4.0)

Slope (Degrees)

- 0 - 2
- 2 - 5
- 5 - 10
- 10 - 15
- >15

Do not scale this map
Client
 RES Group

Project
 Hill of Fare Wind Farm

Title
 Slope

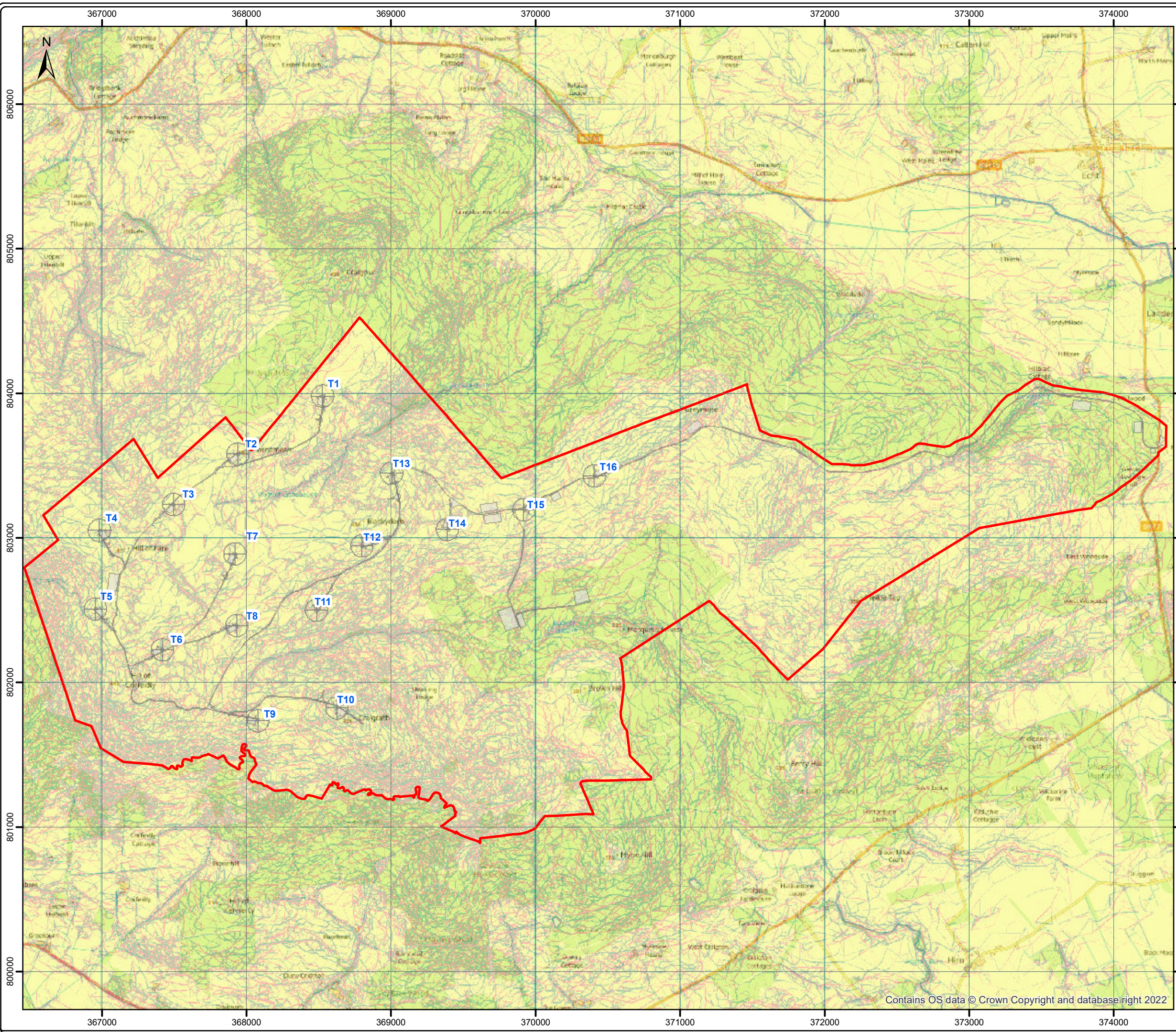
Status
 FINAL

Drawing No. 375565-GIS003	Revision A	Date 04 April 2022
Drawn JAS	Checked MN	Approved MN

Scale
 1:25,000 @A3

Rev	Date	Amendment	Initials
A	11/09/23	Updated Boundary and Infrastructure Layout	JAS

8 Eagle Street, Craighall Business Park, Glasgow, G4 9XA.
 T: 0141 341 5040 E: info@envirocentre.co.uk
 W: www.envirocentre.co.uk



Legend

- Site Boundary
- Design Freeze Layout (Rev 4.0)

Curvature

- <math>< -0.3</math> (Highly Convex)
- -0.3 - -0.1 (Convex)
- -0.1 - 0.1 (Straight)
- 0.1 - 0.3 (Concave)
- > 0.3 (Highly Concave)

Do not scale this map
Client
 RES Group

Project
 Hill of Fare Wind Farm

Title
 Curvature

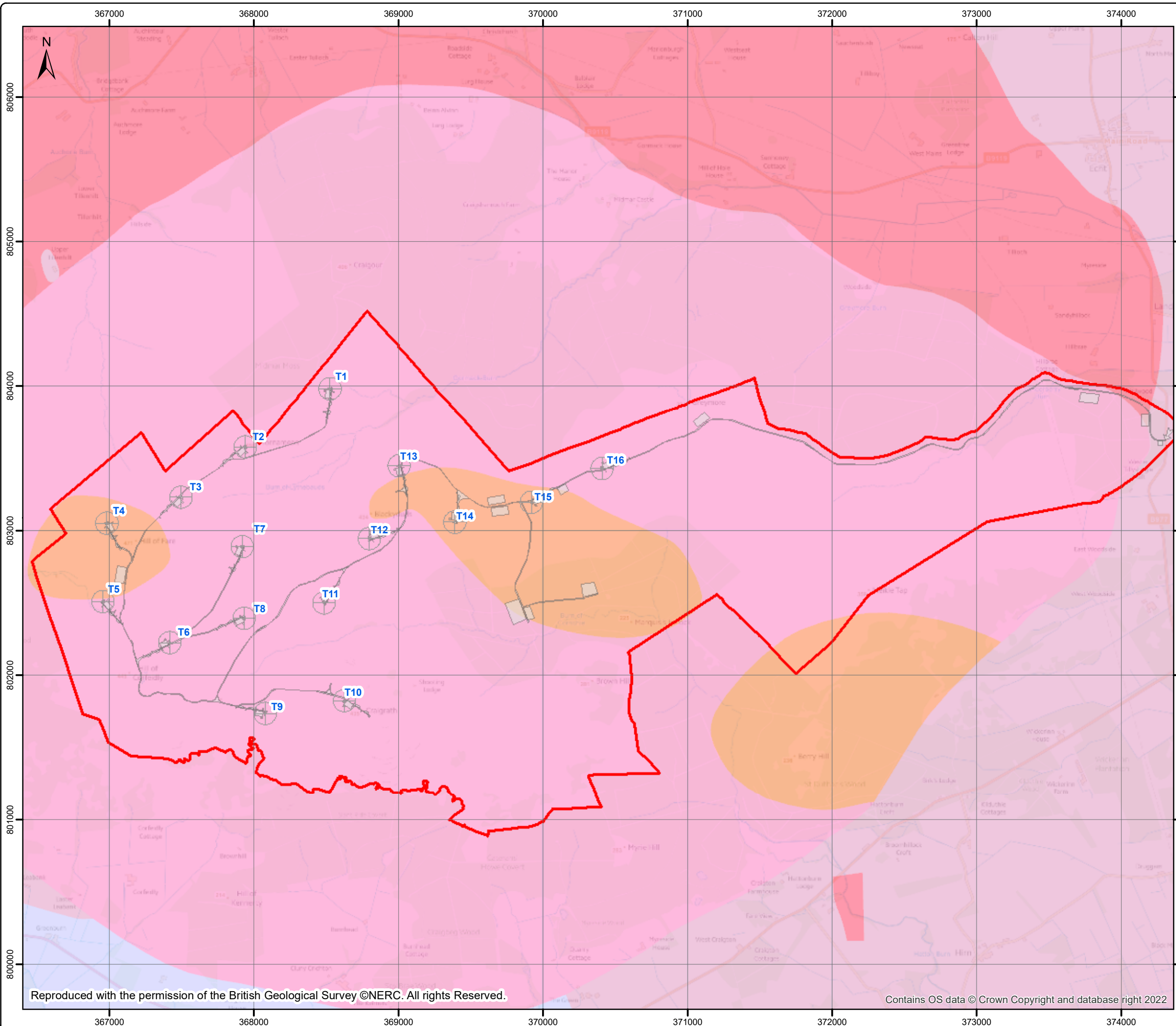
Status
 FINAL

Drawing No. 375565-GIS005	Revision A	Date 04 April 2022
Drawn JAS	Checked MN	Approved MN

Scale
 1:25,000 @A3

Rev	Date	Amendment	Initials
A	11/09/23	Updated Boundary and Infrastructure Layout	JAS

8 Eagle Street, Craighall Business Park, Glasgow, G4 9XA.
 T: 0141 341 5040 E: info@envirocentre.co.uk
 W: www.envirocentre.co.uk



Legend

- Site Boundary
- Design Freeze Layout (Rev 4.0)

BGS 1:50,000 Bedrock Geology

- Hill of Fare Intrusion Micrograniteaplitic
- Balblair Intrusion - Microgranodiorite
- Crathes Pluton - Granodiorite
- Hill of Fare Intrusion Leucogranite
- Hill of Fare Intrusion Microgranite

Do not scale this map
Client
 RES Group

Project
 Hill of Fare Wind Farm

Title
 Bedrock Geology

Status
 FINAL

Drawing No. 375565-GIS006	Revision A	Date 04 April 2022
Drawn JAS	Checked MN	Approved MN

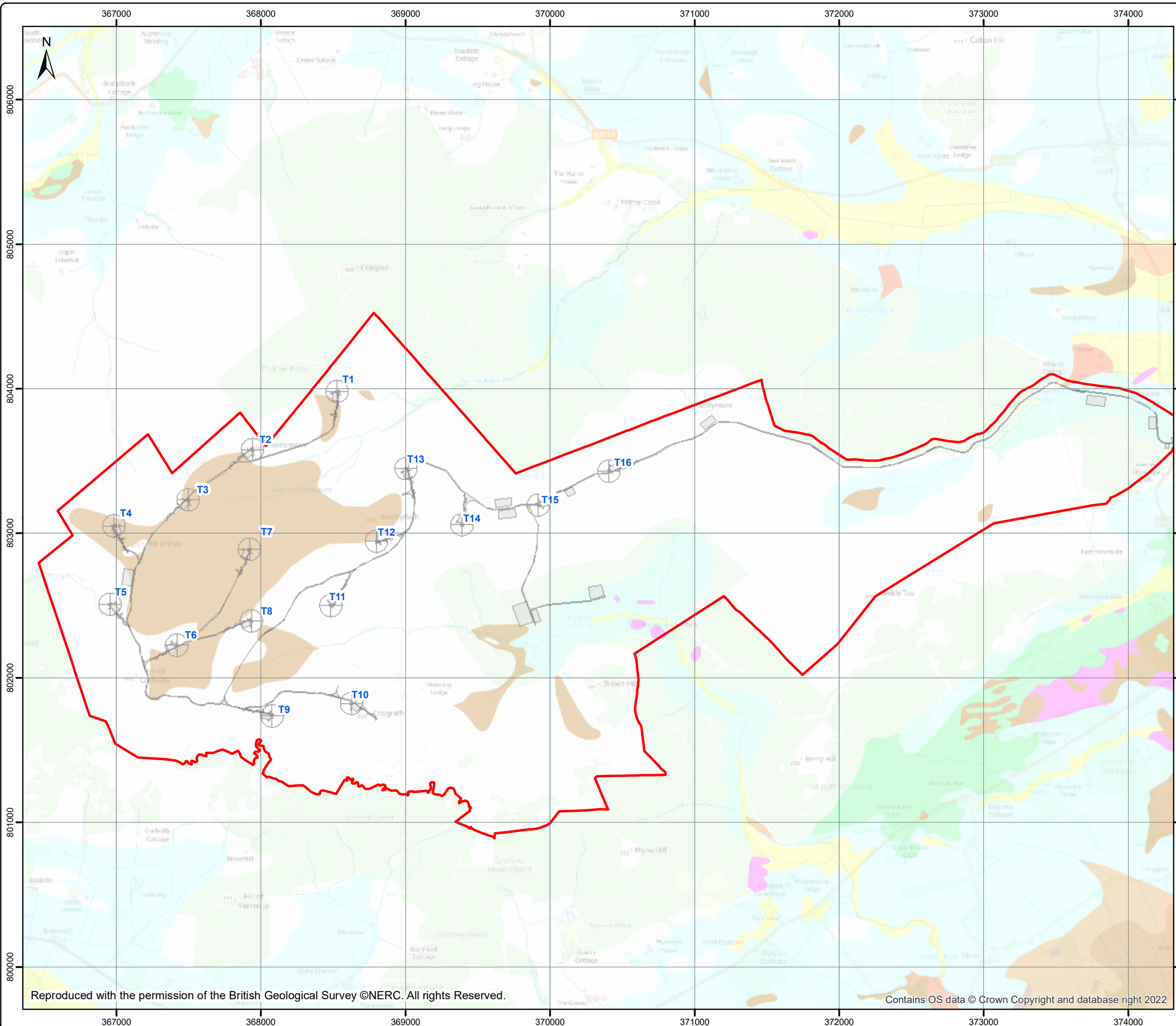
Scale
 1:25,000 @A3

Rev	Date	Amendment	Initials
A	11/09/23	Updated boundary and infrastructure layout	JAS

8 Eagle Street, Craighall Business Park, Glasgow, G4 9XA.
 T: 0141 341 5040 E: info@envirocentre.co.uk
 W: www.envirocentre.co.uk

Reproduced with the permission of the British Geological Survey ©NERC. All rights Reserved.

Contains OS data © Crown Copyright and database right 2022



Legend

- Site Boundary
- Design Freeze Layout (Rev 4.0)

BGS 1:50,000 Superficial Deposits

- Peat
- Alluvium
- Glaciofluvial Sheet Deposits
- Banchory Till Formation

Do not scale this map
Client
 RES Group

Project
 Hill of Fare Wind Farm

Title
 Superficial Geology

Status
 FINAL

Drawing No. 375565-GIS007	Revision A	Date 04 April 2022
Drawn JAS	Checked MN	Approved MN

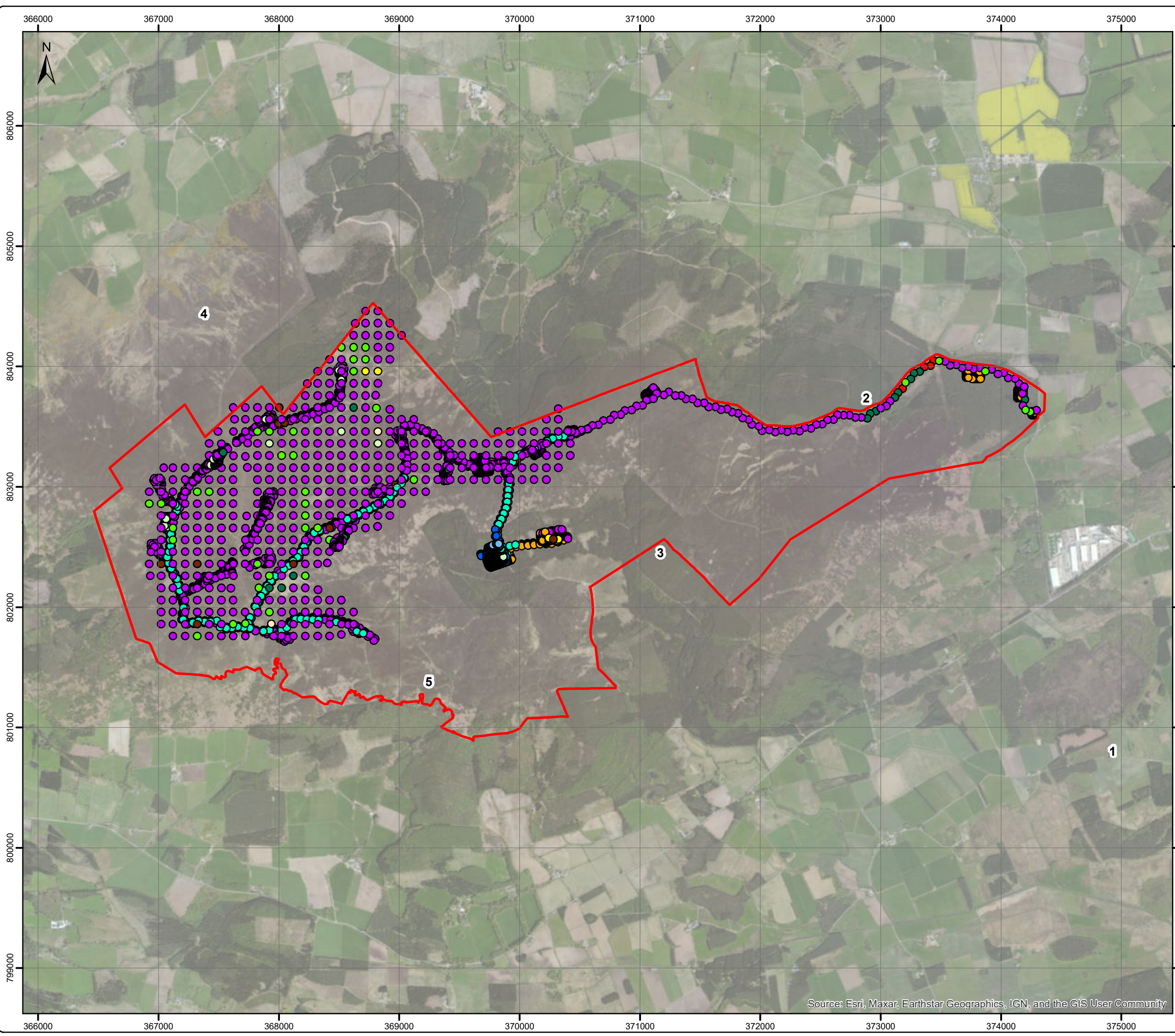
Scale
 1:25,000 @A3

Rev	Date	Amendment	Initials
A	11/09/23	Updated Boundary and Infrastructure Layout	JAS

8 Eagle Street, Craighall Business Park, Glasgow, G4 9XA.
 T: 0141 341 5040 E: info@envirocentre.co.uk
 W: www.envirocentre.co.uk

Reproduced with the permission of the British Geological Survey ©NERC. All rights Reserved.

Contains OS data © Crown Copyright and database right 2022



Legend

- Site Boundary
- Vegetation Type**
- Bare/Rocks
- Bog/Moss
- Bracken
- Felled Trees
- Grass
- Hag
- Heather
- Moss
- Reeds
- Track
- Woodland/Grass
- Woodland/moss

Do not scale this map

Client
RES Group

Project
Hill of Fare Wind Farm

Title
Vegetation Type
Page 1 of 5

Status
FINAL

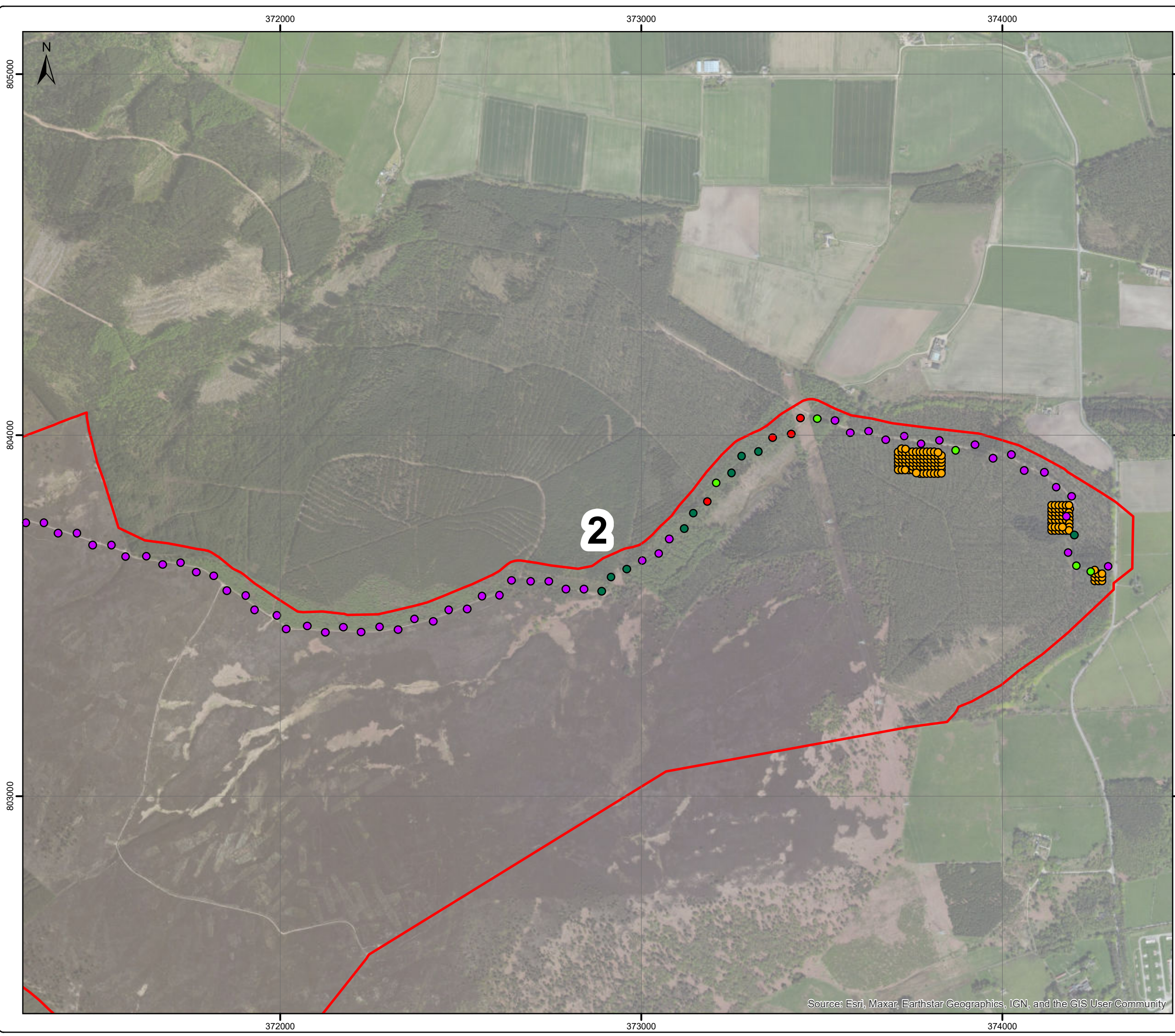
Drawing No. 375565-GIS008	Revision A	Date 04 April 2022
Drawn JAS	Checked MN	Approved MN

Scale
1:30,000 @A3

Rev	Date	Amendment	Initials
A	06/09/23	Additional Data from Phase 2 Survey	JAS

8 Eagle Street, Craighall Business Park, Glasgow, G4 9XA.
T: 0141 341 5040 E: info@envirocentre.co.uk
W: www.envirocentre.co.uk

Source: Esri, Maxar, Earthstar Geographics, IGN, and the GIS User Community



Legend

- Site Boundary
- Vegetation Type**
- Bare/Rocks
- Bog/Moss
- Bracken
- Felled Trees
- Grass
- Hag
- Heather
- Moss
- Reeds
- Track
- Woodland/Grass
- Woodland/moss

Do not scale this map

Client
RES Group

Project
Hill of Fare Wind Farm

Title
Vegetation Type
Page 2 of 5

Status		
FINAL		
Drawing No.	Revision	Date
375565-GIS008	A	04 April 2022
Drawn	Checked	Approved
JAS	MN	MN

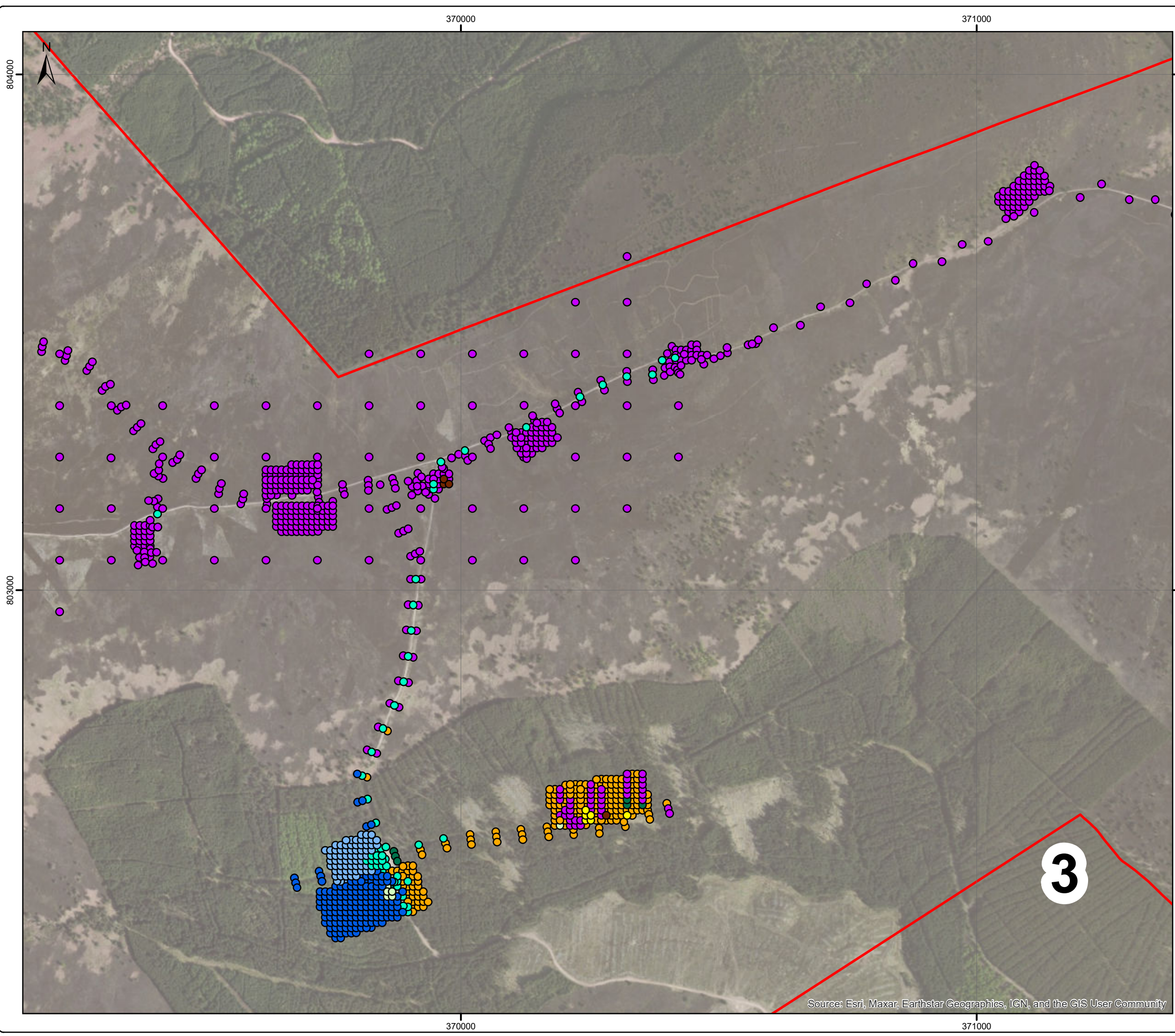
Scale
1:10,000 @A3

Rev	Date	Amendment	Initials
A	06/09/23	Additional Data from Phase 2 Survey	JAS

envirocentre

8 Eagle Street, Craighall Business Park, Glasgow, G4 9XA.
T: 0141 341 5040 E: info@envirocentre.co.uk
W: www.envirocentre.co.uk

Source: Esri, Maxar, Earthstar Geographics, IGN, and the GIS User Community



Source: Esri, Maxar, Earthstar Geographics, IGN, and the GIS User Community

Legend

- Site Boundary

Vegetation Type

- Bare/Rocks
- Bog/Moss
- Bracken
- Felled Trees
- Grass
- Hag
- Heather
- Moss
- Reeds
- Track
- Woodland/Grass
- Woodland/moss

Do not scale this map

Client
RES Group

Project
Hill of Fare Wind Farm

Title
Vegetation Type
Page 3 of 5

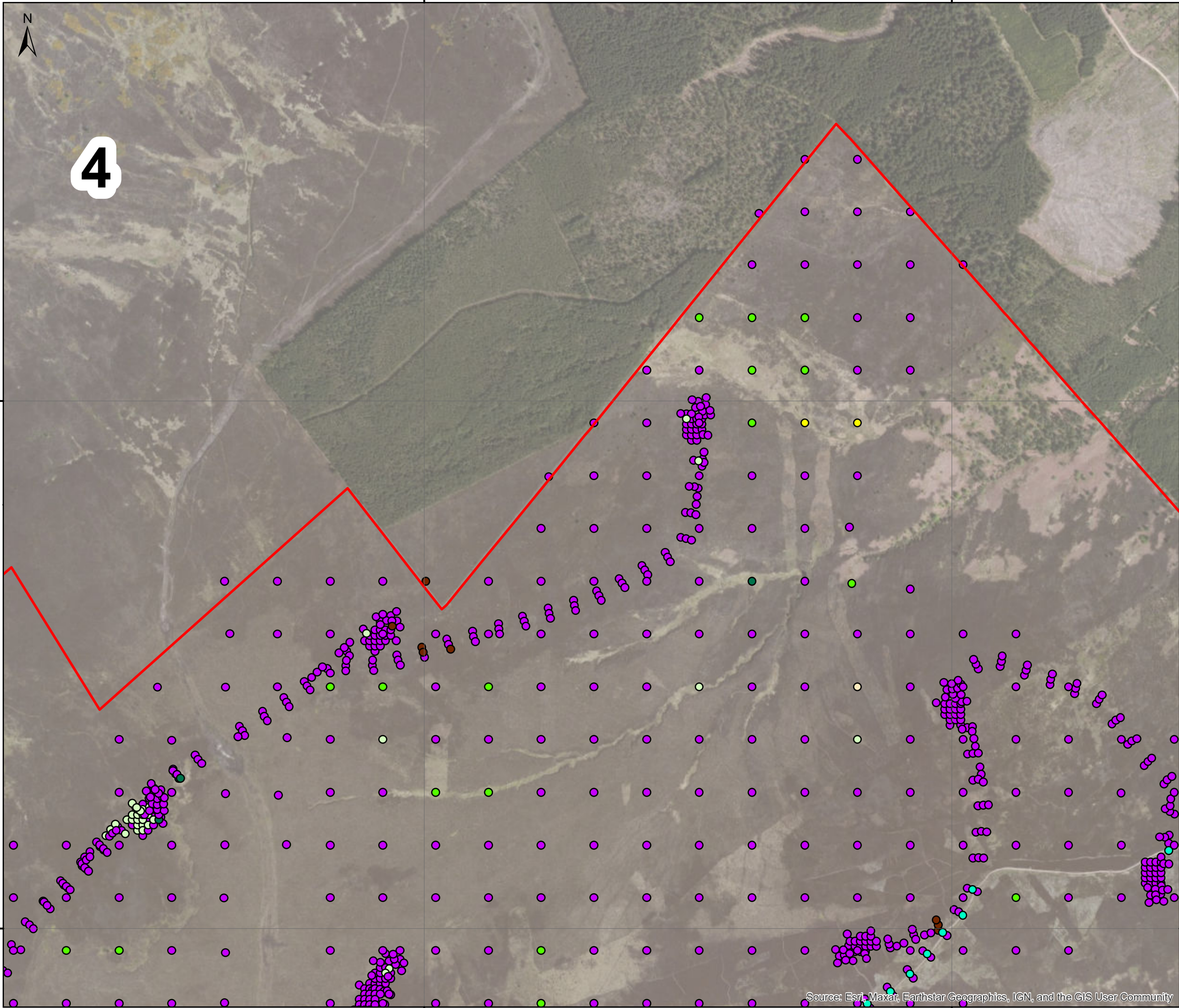
Status
FINAL

Drawing No. 375565-GIS008	Revision A	Date 04 April 2022
Drawn JAS	Checked MN	Approved MN

Scale
1:7,000 @A3

Rev	Date	Amendment	Initials
A	06/09/23	Additional Data from Phase 2 Survey	JAS

8 Eagle Street, Craighall Business Park, Glasgow, G4 9XA.
T: 0141 341 5040 E: info@envirocentre.co.uk
W: www.envirocentre.co.uk



4

Legend

- Site Boundary
- Vegetation Type**
- Bare/Rocks
- Bog/Moss
- Bracken
- Felled Trees
- Grass
- Hag
- Heather
- Moss
- Reeds
- Track
- Woodland/Grass
- Woodland/moss

Do not scale this map

Client
RES Group

Project
Hill of Fare Wind Farm

Title
Vegetation Type
Page 4 of 5

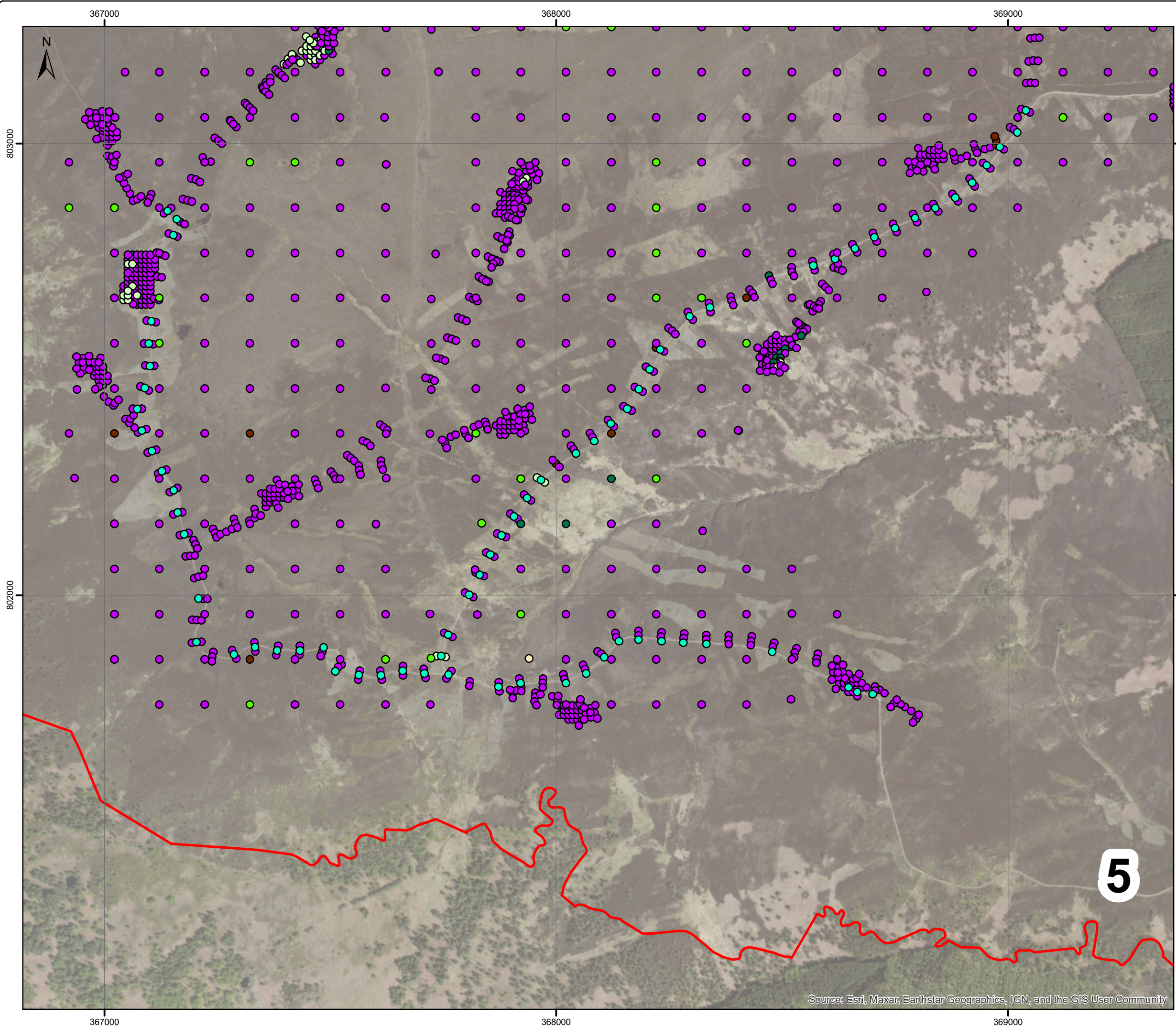
Status		
FINAL		
Drawing No. 375565-GIS008	Revision A	Date 04 April 2022
Drawn JAS	Checked MN	Approved MN

Scale
1:7,000 @A3

Rev	Date	Amendment	Initials
A	06/09/23	Additional Data from Phase 2 Survey	JAS

8 Eagle Street, Craighall Business Park, Glasgow, G4 9XA.
T: 0141 341 5040 E: info@envirocentre.co.uk
W: www.envirocentre.co.uk

Source: Esri, Maxar, Earthstar Geographics, IGN, and the GIS User Community



Legend

- Site Boundary

Vegetation Type

- Bare/Rocks
- Bog/Moss
- Bracken
- Felled Trees
- Grass
- Hag
- Heather
- Moss
- Reeds
- Track
- Woodland/Grass
- Woodland/moss

Do not scale this map

Client
RES Group

Project
Hill of Fare Wind Farm

Title
Vegetation Type
Page 5 of 5

Status		
FINAL		
Drawing No. 375565-GIS008	Revision A	Date 04 April 2022
Drawn JAS	Checked MN	Approved MN

Scale
1:8,000 @A3

Rev	Date	Amendment	Initials
A	06/09/23	Additional Data from Phase 2 Survey	JAS

envirocentre
 8 Eagle Street, Craighall Business Park, Glasgow, G4 9XA.
 T: 0141 341 5040 E: info@envirocentre.co.uk
 W: www.envirocentre.co.uk

Source: Esri, Maxar, Earthstar Geographics, IGN, and the GIS User Community