



HILL OF FARE WIND FARM

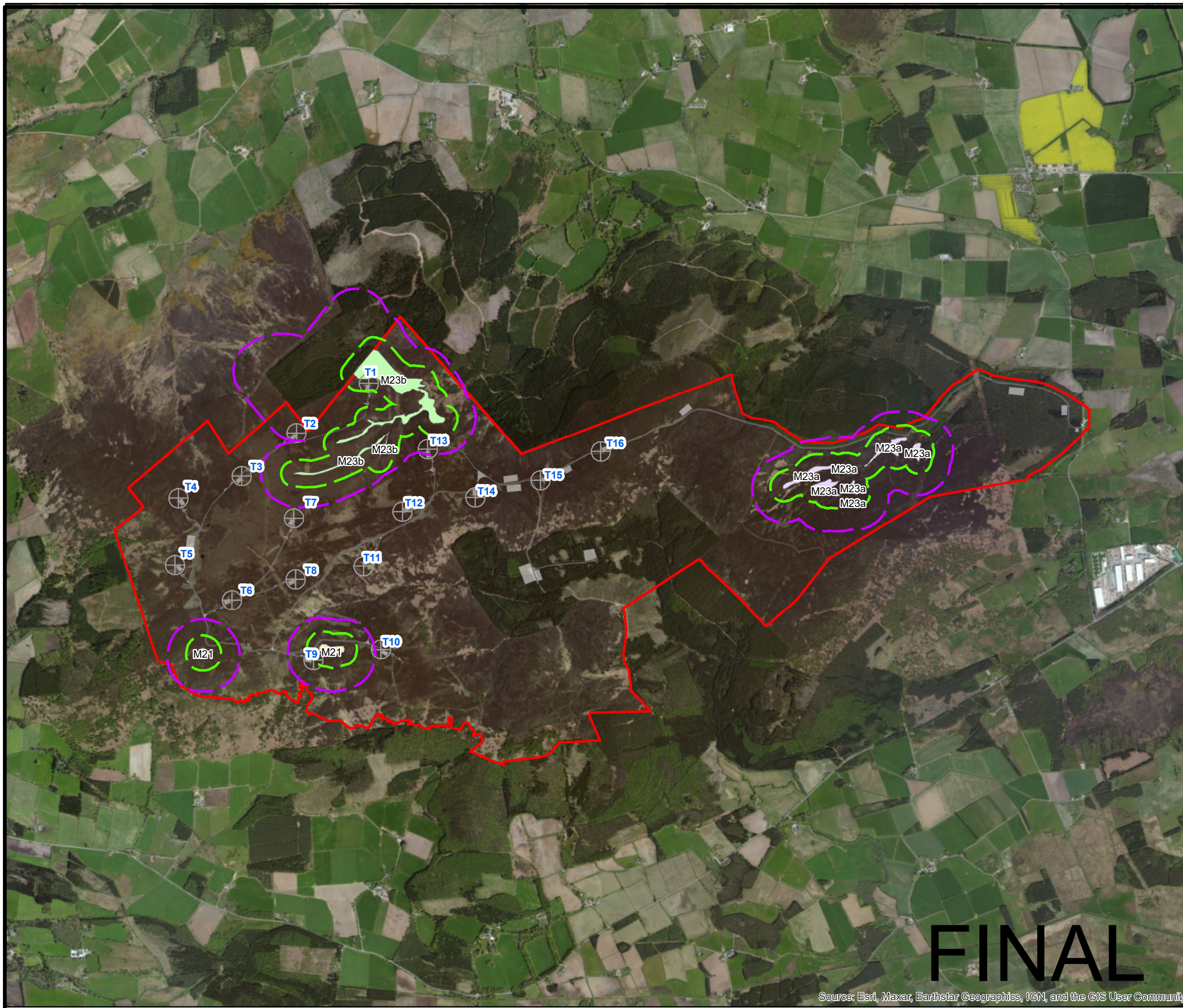
Figure 10.6

GROUNDWATER DEPENDENT TERRESTRIAL ECOSYSTEMS Full View

© CROWN COPYRIGHT, ALL RIGHTS RESERVED. 2023 LICENCE NUMBER 0100031673.

Legend

- Site Boundary
- Design Freeze Layout (Rev 4.0)
- SEPA Buffer (100m)
- SEPA Buffer (250m)
- NVC Code
- M21
- M23a
- M23b



LAYOUT DWG	T-LAYOUT NO.
N/A	N/A

DRAWING NUMBER	375960-GIS013
----------------	---------------

SCALE - 1:30,000 @ A3

Environmental Impact Assessment Report 2023

THIS DRAWING IS THE PROPERTY OF RENEWABLE ENERGY SYSTEMS LTD. AND NO REPRODUCTION MAY BE MADE IN WHOLE OR IN PART WITHOUT PERMISSION
--

FINAL

Source: Esri, Maxar, Earthstar Geographics, IGN, and the GIS User Community



HILL OF FARE WIND FARM

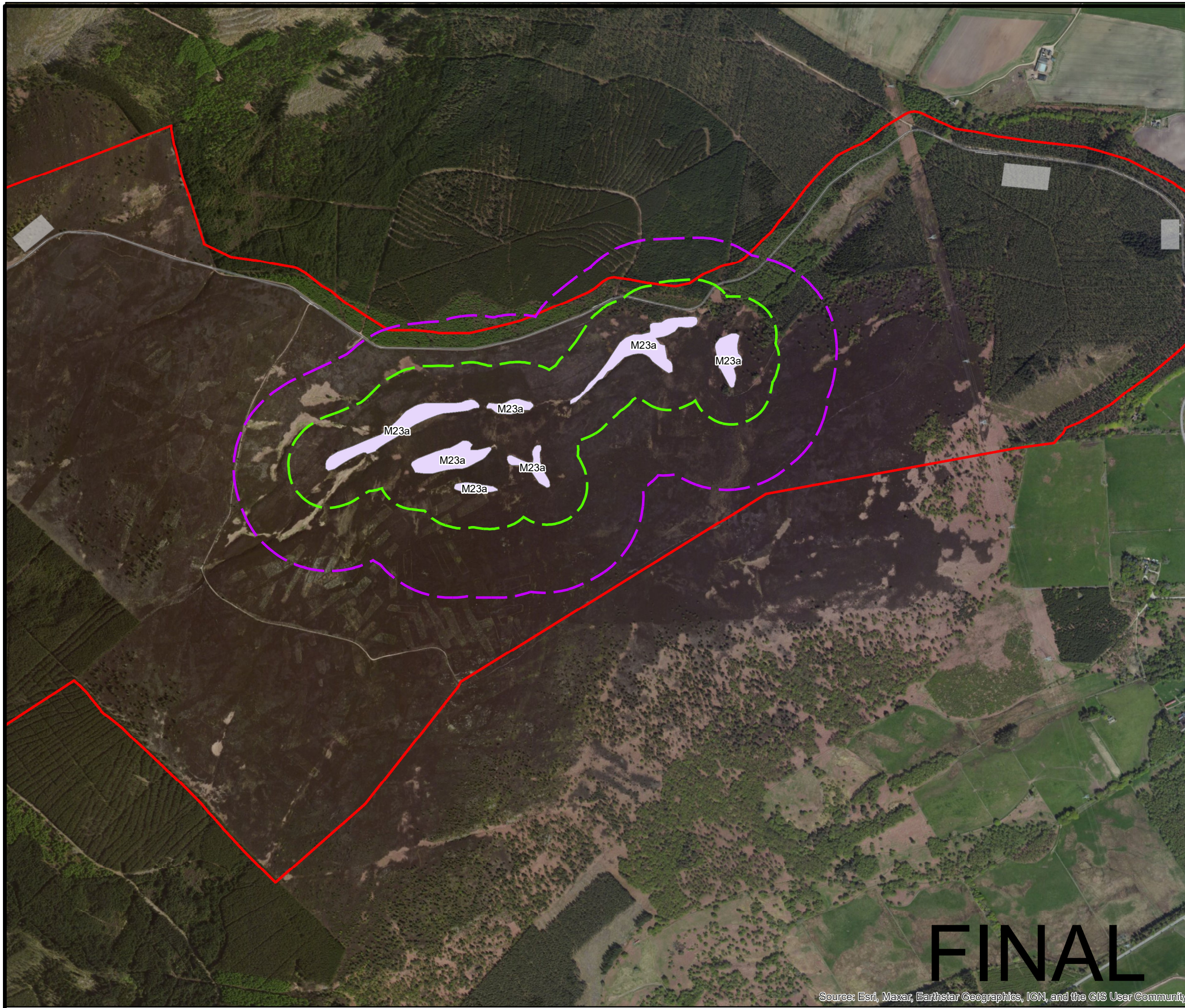
Figure 10.6

GROUNDWATER DEPENDENT TERRESTRIAL ECOSYSTEMS North-East

© CROWN COPYRIGHT, ALL RIGHTS RESERVED.
2023 LICENCE NUMBER 0100031673.

Legend

- Site Boundary
- Design Freeze Layout (Rev 4.0)
- SEPA Buffer (100m)
- SEPA Buffer (250m)
- NVC Code
- M21
- M23a
- M23b



FINAL

Source: Esri, Maxar, Earthstar Geographics, IGN, and the GIS User Community

LAYOUT DWG	N/A	T-LAYOUT NO.	N/A
------------	-----	--------------	-----

DRAWING NUMBER	375960-GIS013
----------------	----------------------

SCALE -	1:10,000 @ A3
---------	----------------------

Environmental Impact Assessment Report 2023

THIS DRAWING IS THE PROPERTY OF RENEWABLE ENERGY SYSTEMS LTD. AND NO REPRODUCTION MAY BE MADE IN WHOLE OR IN PART WITHOUT PERMISSION



HILL OF FARE WIND FARM

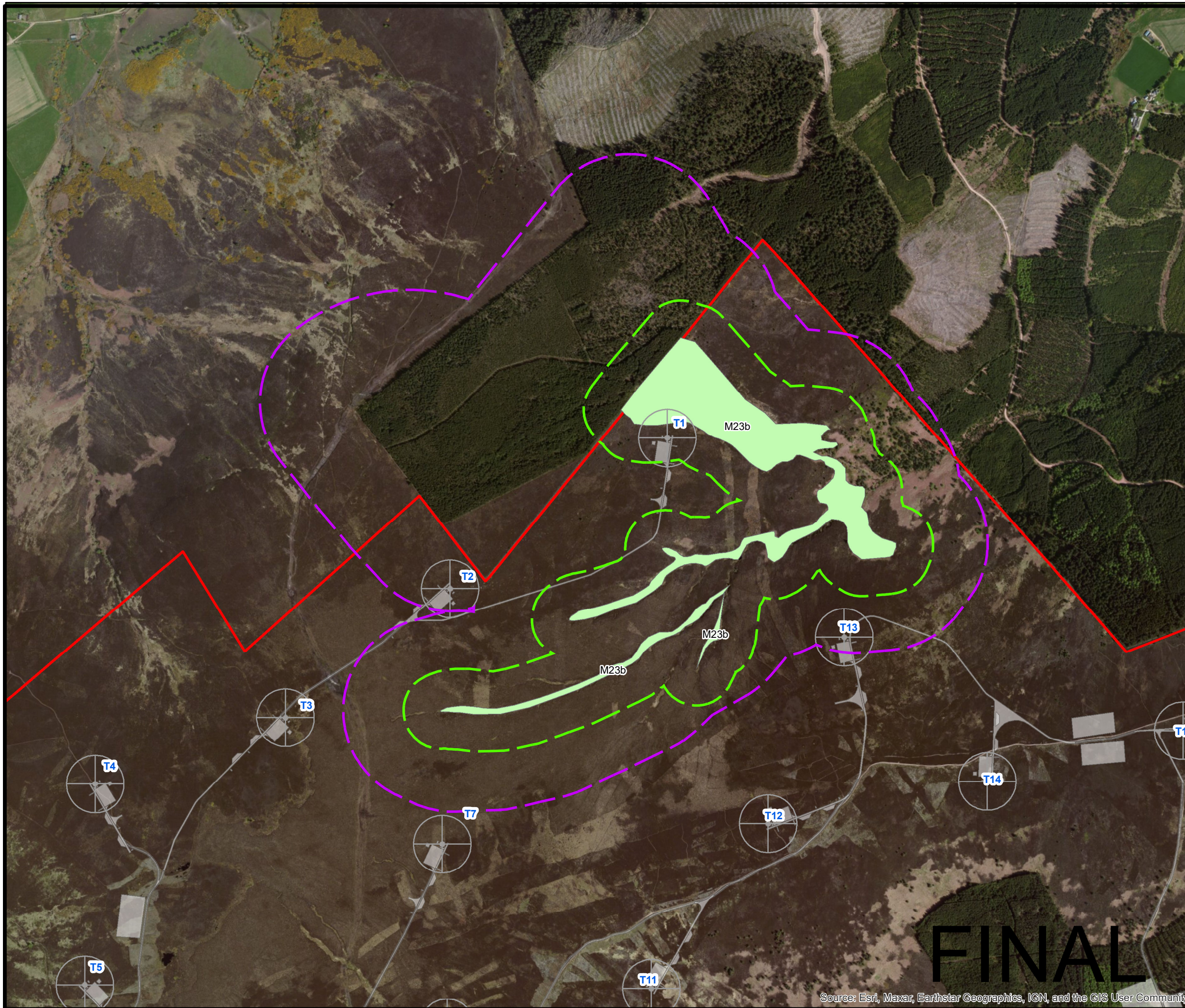
Figure 10.6

GROUNDWATER DEPENDENT TERRESTRIAL ECOSYSTEMS North-West

© CROWN COPYRIGHT, ALL RIGHTS RESERVED.
2023 LICENCE NUMBER 0100031673.

Legend

- Site Boundary
- Design Freeze Layout (Rev 4.0)
- SEPA Buffer (100m)
- SEPA Buffer (250m)
- NVC Code
 - M21
 - M23a
 - M23b



LAYOUT DWG N/A T-LAYOUT NO. N/A

DRAWING NUMBER **375960-GIS013**

SCALE - 1:10,000 @ A3

Environmental Impact Assessment Report 2023

THIS DRAWING IS THE PROPERTY OF RENEWABLE ENERGY SYSTEMS LTD. AND NO REPRODUCTION MAY BE MADE IN WHOLE OR IN PART WITHOUT PERMISSION

FINAL

Source: Esri, Maxar, Earthstar Geographics, IGN, and the GIS User Community



HILL OF FARE WIND FARM

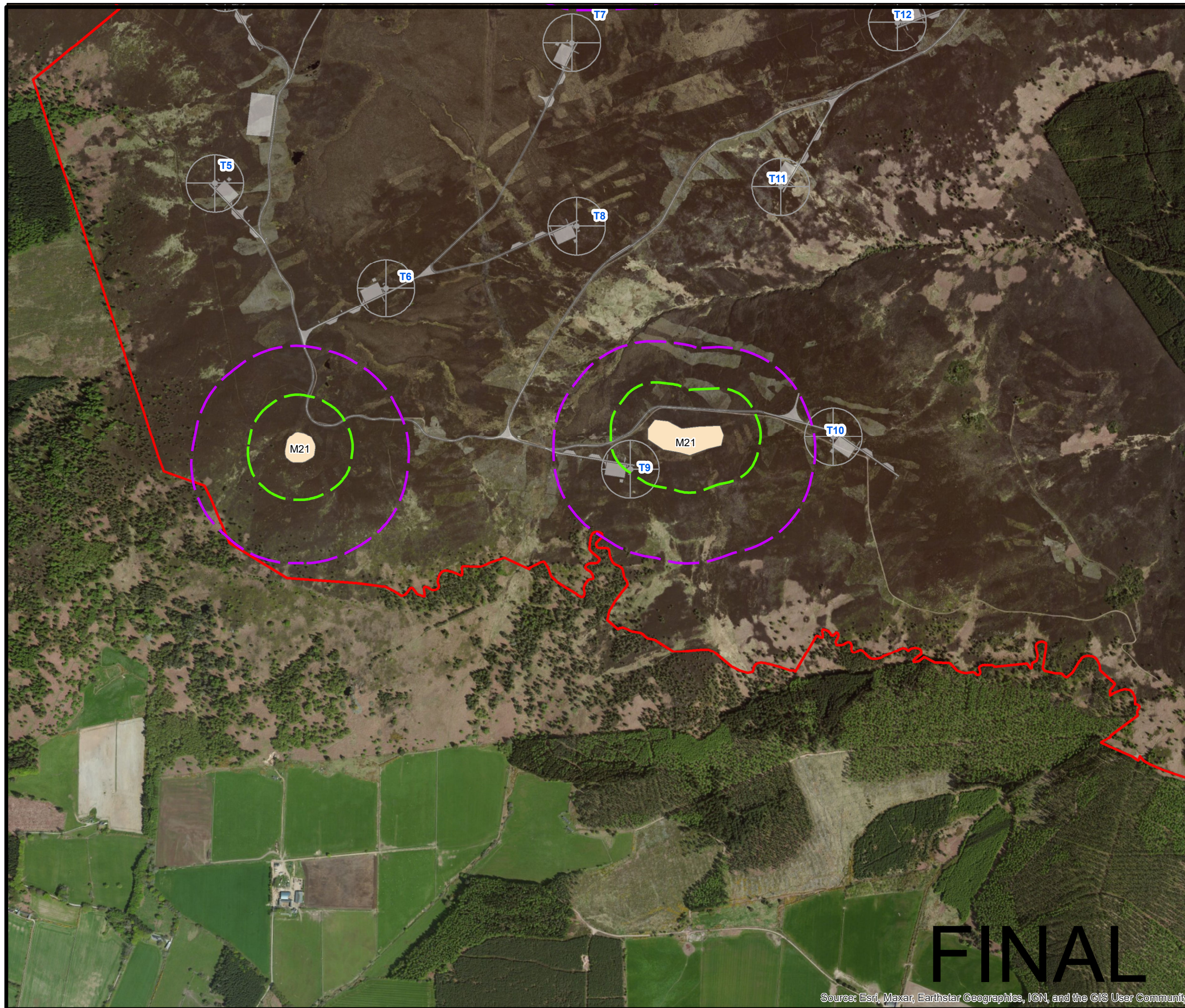
Figure 10.6

GROUNDWATER DEPENDENT TERRESTRIAL ECOSYSTEMS South-West

© CROWN COPYRIGHT, ALL RIGHTS RESERVED.
2023 LICENCE NUMBER 0100031673.

Legend

- Site Boundary
- Design Freeze Layout (Rev 4.0)
- SEPA Buffer (100m)
- SEPA Buffer (250m)
- NVC Code
 - M21
 - M23a
 - M23b



LAYOUT DWG	N/A	T-LAYOUT NO.	N/A
------------	-----	--------------	-----

DRAWING NUMBER	375960-GIS013
----------------	----------------------

SCALE -	1:10,000 @ A3
---------	----------------------

Environmental Impact Assessment Report 2023

THIS DRAWING IS THE PROPERTY OF RENEWABLE ENERGY SYSTEMS LTD. AND NO REPRODUCTION MAY BE MADE IN WHOLE OR IN PART WITHOUT PERMISSION

FINAL

Source: Esri, Maxar, Earthstar Geographics, IGN, and the GIS User Community