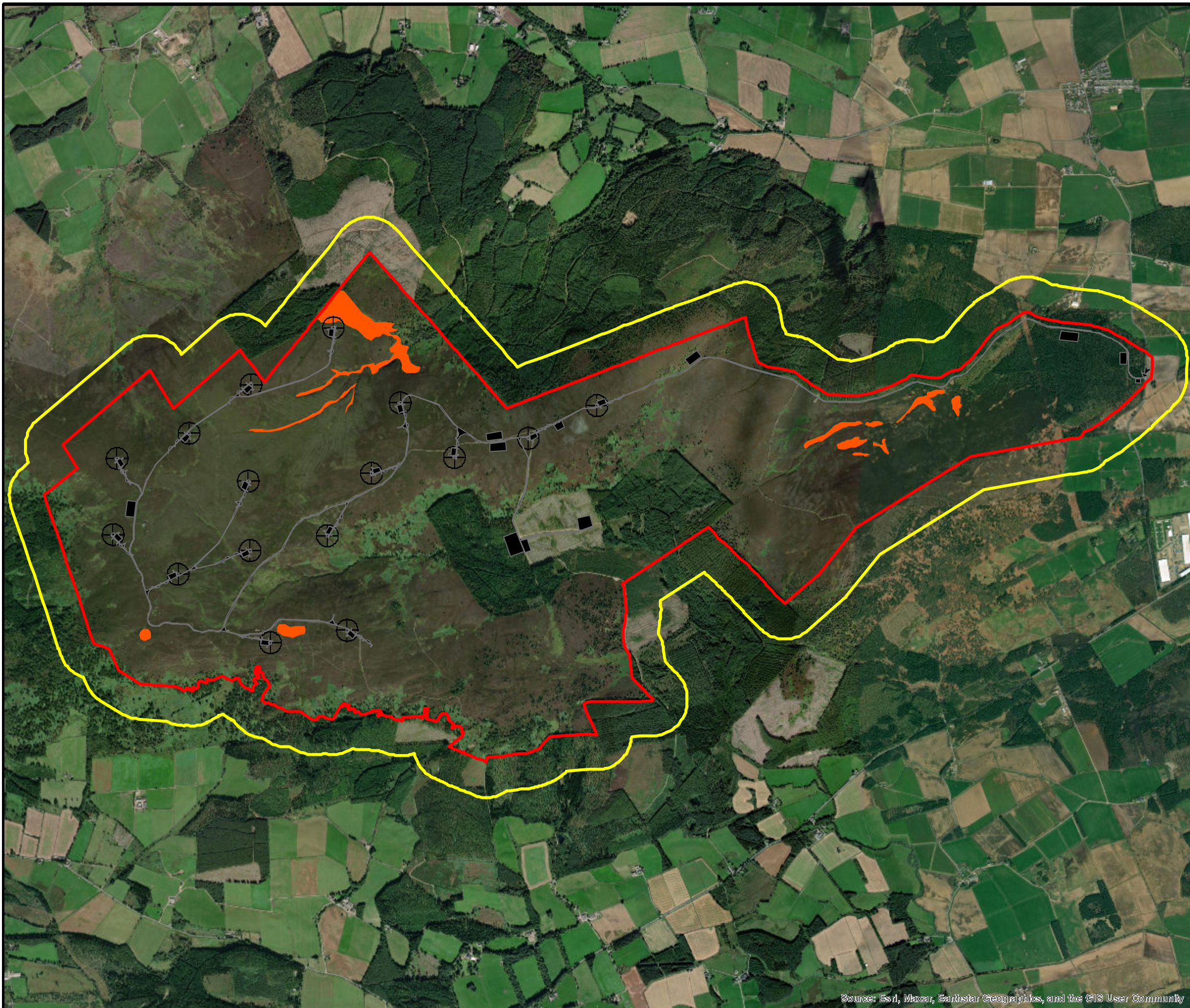


**HILL OF FARE WIND FARM  
EIA REPORT**


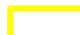


**FIG 8.5**

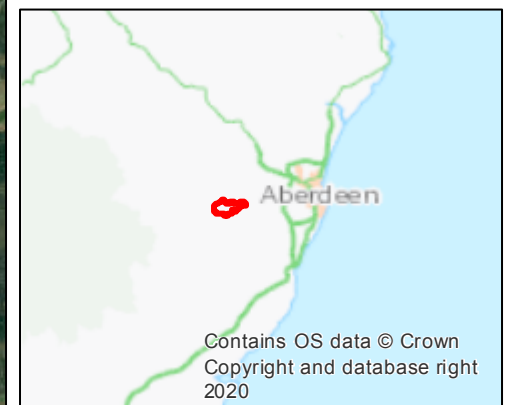
**AREAS OF POTENTIAL  
GROUNDWATER  
DEPENDANT  
TERRESTRIAL  
ECOSYSTEMS**

© CROWN COPYRIGHT, ALL RIGHTS RESERVED.  
2023 LICENCE NUMBER 0100031673.



**KEY**

-  Site Boundary
-  250 m buffer
-  High Potential Groundwater Dependency
-  Infrastructure Layout



Contains OS data © Crown  
Copyright and database right  
2020



SCALE - 1:26,394 @ A3

**ENVIRONMENTAL IMPACT ASSESSMENT  
REPORT 2023**

THIS DRAWING IS THE PROPERTY OF RENEWABLE ENERGY  
SYSTEMS LTD. AND NO REPRODUCTION MAY BE MADE IN  
WHOLE OR IN PART WITHOUT PERMISSION

Source: Esri, Maxar, Earthstar Geographics, and the GIS User Community