

**HILL OF FARE WIND FARM  
EIA REPORT**

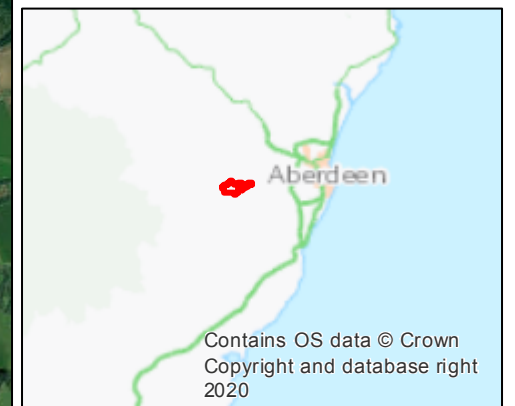
**FIG 8.3**

**PROTECTED SPECIES  
RESULTS**

© CROWN COPYRIGHT, ALL RIGHTS RESERVED.  
2023 LICENCE NUMBER 0100031673.

**KEY**

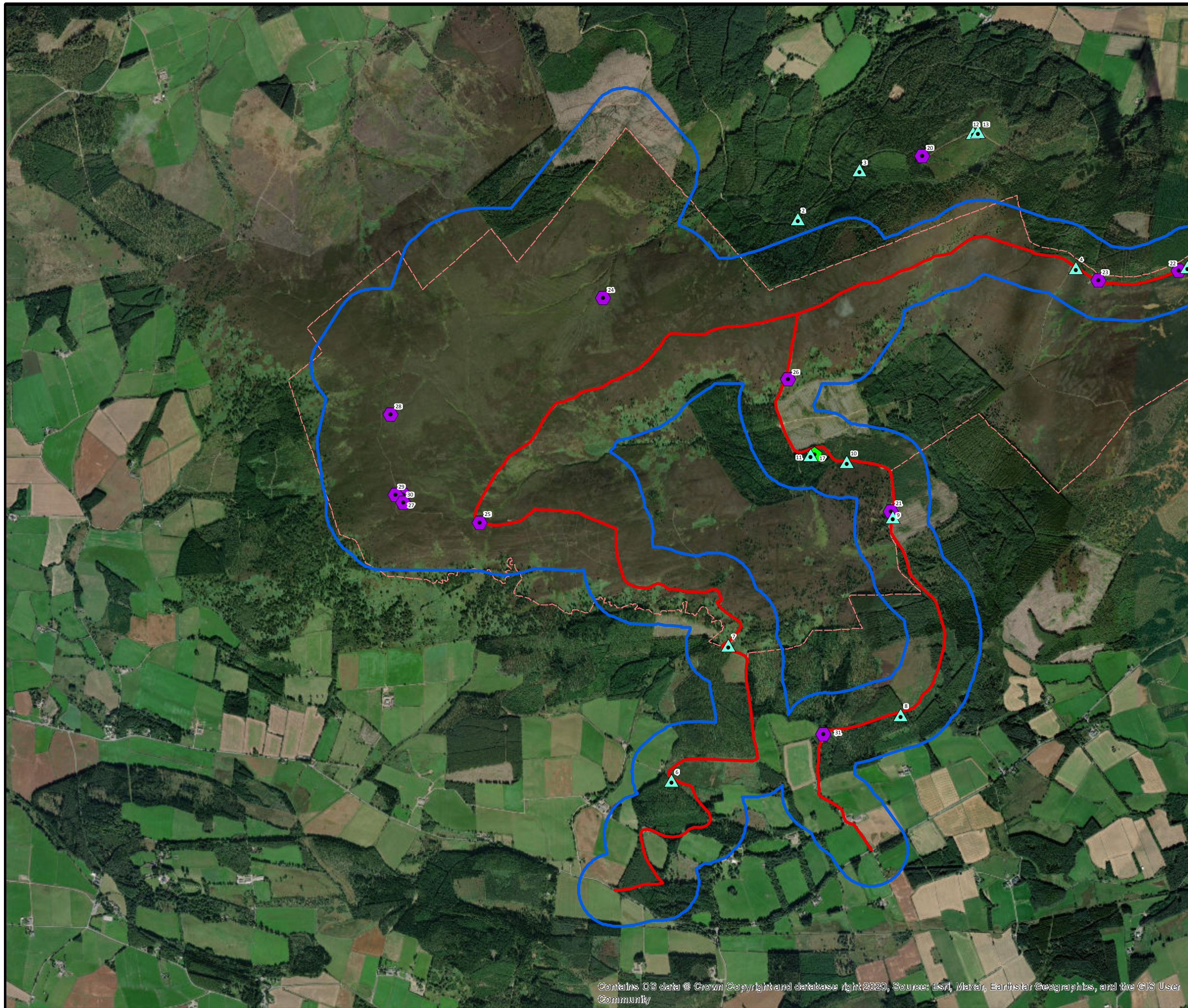
-  Site Boundary
-  250 m survey buffer
-  Development Area
-  Access tracks
-  Pine marten field signs
-  Otter field signs
-  Other field signs
-  Japanese knotweed



SCALE - 1:25,379 @ A3

**ENVIRONMENTAL IMPACT ASSESSMENT  
REPORT 2023**

THIS DRAWING IS THE PROPERTY OF RENEWABLE ENERGY SYSTEMS LTD. AND NO REPRODUCTION MAY BE MADE IN WHOLE OR IN PART WITHOUT PERMISSION



Contains OS data © Crown Copyright and database right 2020, Source: Esri, Maxar, Earthstar Geographics, and the GIS User Community

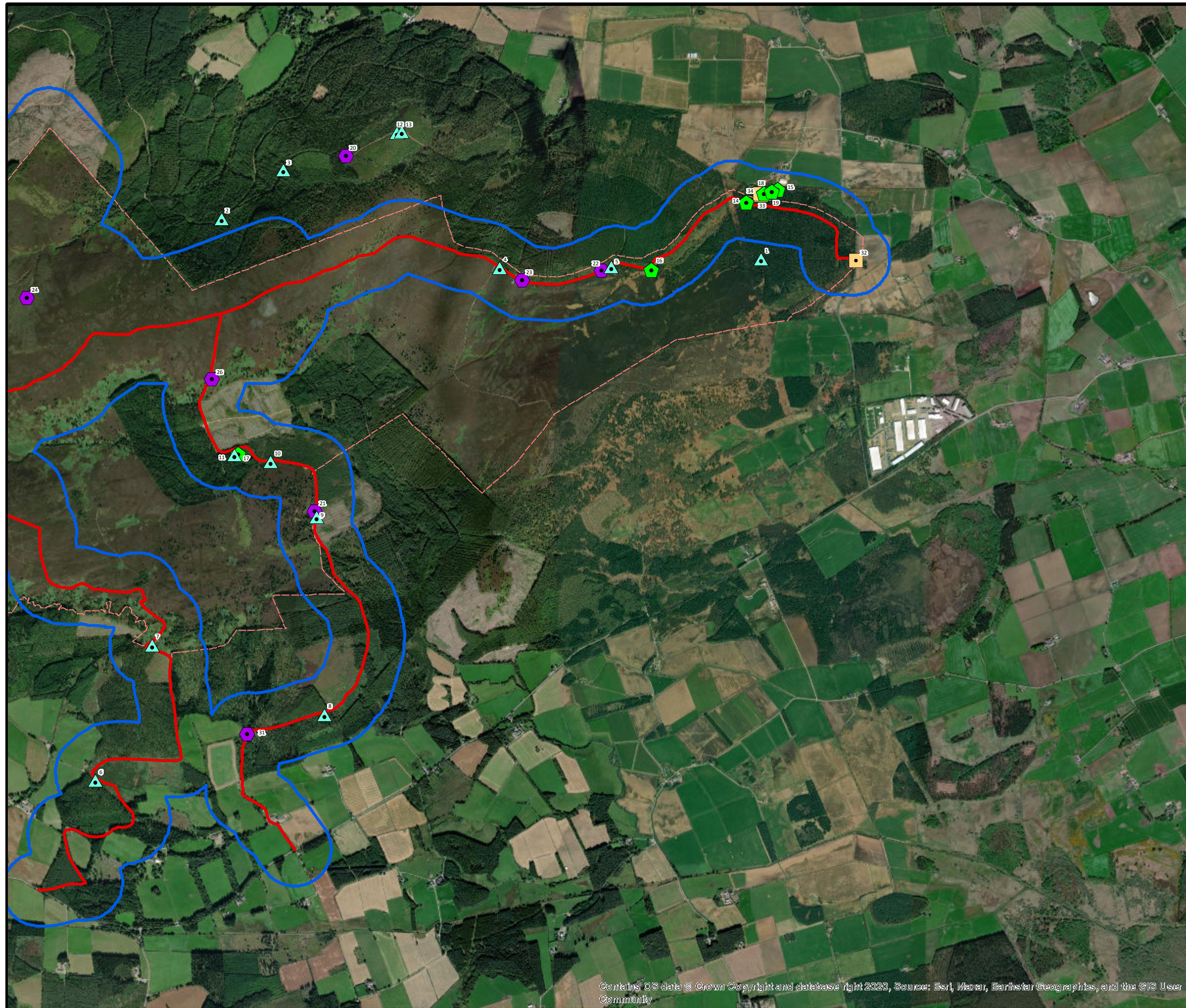


**HILL OF FARE WIND FARM  
EIA REPORT**

**FIG 8.3**

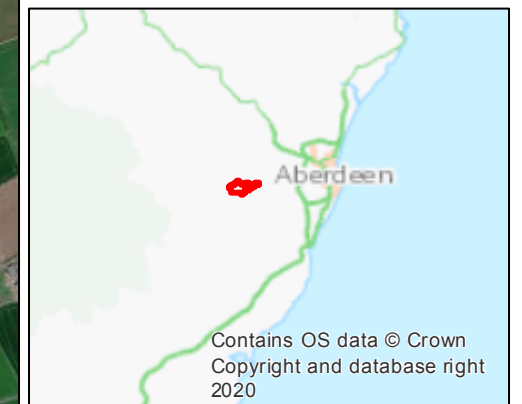
**PROTECTED SPECIES  
RESULTS**

© CROWN COPYRIGHT, ALL RIGHTS RESERVED.  
2023 LICENCE NUMBER 0100031673.



**KEY**

-  Site Boundary
-  250 m survey buffer
-  Development Area
-  Access tracks
-  Pine marten field signs
-  Otter field signs
-  Other field signs
-  Japanese knotweed



SCALE - 1:25,379 @ A3

**ENVIRONMENTAL IMPACT ASSESSMENT  
REPORT 2023**

THIS DRAWING IS THE PROPERTY OF RENEWABLE ENERGY SYSTEMS LTD. AND NO REPRODUCTION MAY BE MADE IN WHOLE OR IN PART WITHOUT PERMISSION

Contains OS data © Crown Copyright and database right 2020, Source: Esri, Maxar, Earthstar Geographics, and the GIS User Community