

# HILL OF FARE WIND FARM

## FIGURE 6.20

### BLADE TIP ZTV TO 35 KM (SW QUADRANT) WITH VIEWPOINTS

© CROWN COPYRIGHT, ALL RIGHTS RESERVED.  
2023 LICENCE NUMBER 0100031673.

#### KEY

- Site Boundary
- Proposed Turbines
- Study Area 35 km
- District Boundary
- Cairngorms National Park

#### L VIA Viewpoint

- Photomontage
- Wireline

#### Blade Tip Zone of Theoretical Visibility (180m and 200m)

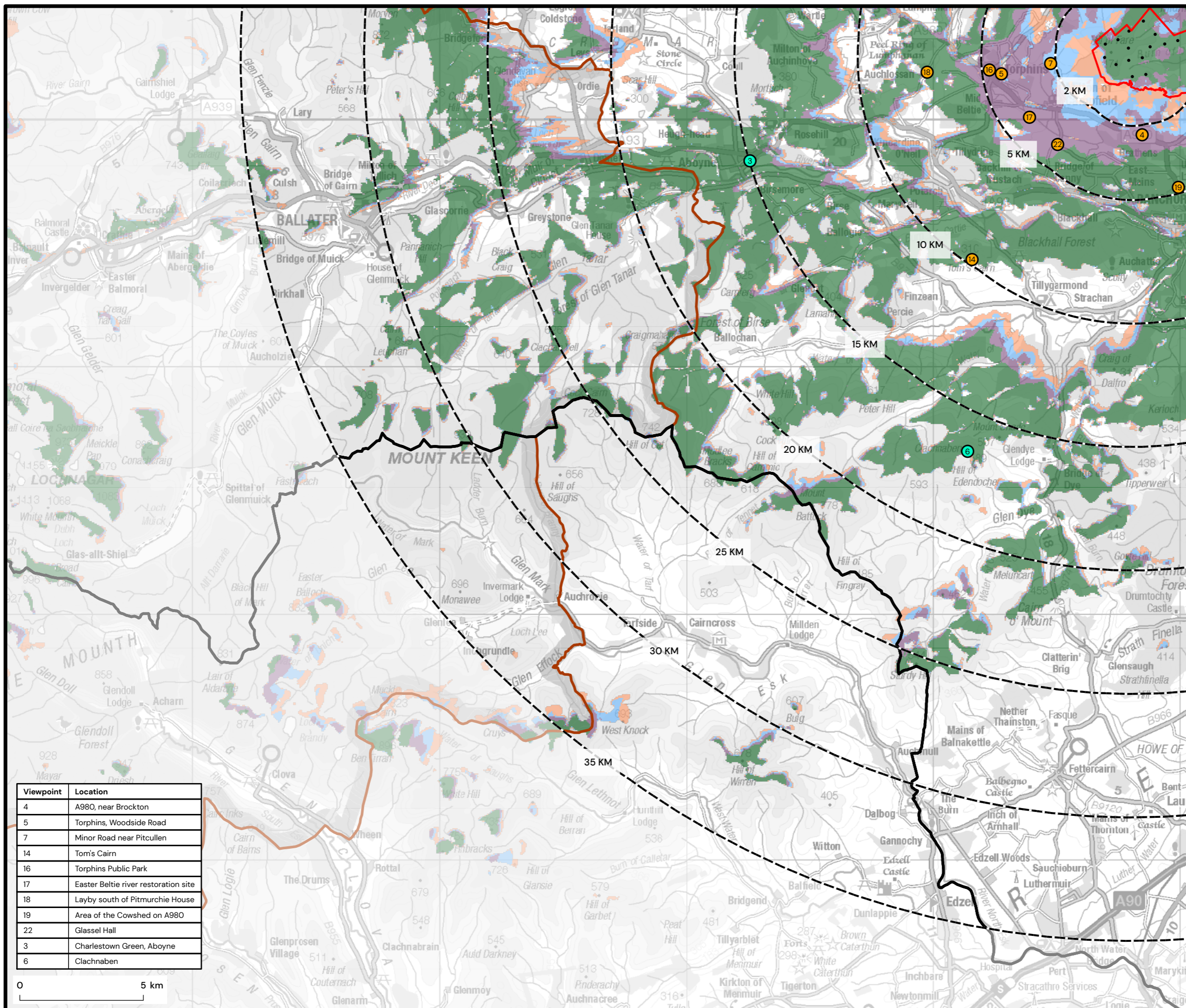
- 1 to 4 turbines visible
- 5 to 8 turbines visible
- 9 to 12 turbines visible
- 13 to 16 turbines visible



SCALE - 1:150,000 @ A3

#### ENVIRONMENTAL IMPACT ASSESSMENT REPORT 2023

THIS DRAWING IS THE PROPERTY OF RENEWABLE ENERGY SYSTEMS LTD. AND NO REPRODUCTION MAY BE MADE IN WHOLE OR IN PART WITHOUT PERMISSION



Viewpoint	Location
4	A980, near Brockton
5	Torphins, Woodside Road
7	Minor Road near Pitcullen
14	Tom's Cairn
16	Torphins Public Park
17	Easter Beltie river restoration site
18	Layby south of Pitmurchie House
19	Area of the Cowshed on A980
22	Glassel Hall
3	Charlestown Green, Aboyne
6	Clachnaben

